



Evaluation of Warm Homes Project Executive Summary

Report #1

July 2008

Planning and Evaluation Unit
Rashi Foundation

Evaluation by:

Tovanot

Organizational evaluation, planning and consulting

Executive Summary

The Warm Homes project is supplemented by research evaluation that began in March 2008 and will end in July 2009. The research evaluation is managed by the consulting firm Tovanot, who are directed, trained and accompanied by Tali Rosov of the Rashi Foundation Planning and Evaluation Unit. This is the first of three reports to be issued, in effect constituting a model integrating examination and evaluation, to be submitted to the program director as an efficient monitoring tool. Following is a summary of the evaluation findings.

1. On the level of the Warm Home:

- The average number of teenage girls registered in the Project Homes is almost double that of the average in Control Homes (48 compared with 25, respectively) as is the number of teenage girls who arrive regularly for activities (33 compared with 18, respectively).
- There was a significant increase of 85% in the number of girls registered in the Warm Homes from the beginning of the project until today (48 compared with 26).
- The average weekly activity hours in the Project Homes are double those in the Control Homes (28 hours compared with 14 hours). The Project Homes are open about five days a week and the Control Homes, three days.
- The mix of girls changed in the upgrade homes owing to an influx new immigrant girls (48% of the girls are new immigrants).
- In all of the homes participating in the project social worker is employed in a position of 1/2 time or more, while in only 40% of the Control Homes a social worker is employed to this extent.
- On average, the extent of hours of the volunteers in the Project Homes is four times greater than that of the Control Homes (49 hours compared with 11 hours, respectively).
- More parental activities take place in the Warm Homes of the project.
- More than one fifth of the girls (197 girls) in the Warm Home have an Personal Program written by the home staff, a significant achievement considering the short time allotted and the work load placed on the social workers in the Warm Homes.
- The girls receive fewer individual treatments from a welfare services social worker: only about 7% of the girls in the Project Homes compared with 26% in the Control Homes.

In general, there is a clear preference for the homes participating in the project, both in the extent of the positions and in the number of volunteers, enabling the home's staff to "produce" many more activities for the girls.

2. On the level of the girls:

- Overall, it can be said that at the time period being examined, the girls in the Project Homes exhibit a higher incidence of at-risk behavior: cigarette smoking (9% more), alcohol (9% more) and drug use (3% more). The rate of delinquency and level of self-injury is similar.

- The girls in the Project Homes are absent from school more frequently and directed less frequently to a full matriculation learning track (46% in the project compared with 54% in the control).
- It was found that girls in the Control Homes exhibit more inner resources compared with the girls in the Project Homes.

This data accompanies "Base Line" as of March-April 2008. Tracking this data over a period of one year will enable identifying the level of effectiveness of operating the Warm Homes project.

Warm Homes Project Background

The Warm Homes project is intended to address teenage girls under the care of the Adolescent Welfare Services and /or girls referred by the educational counselor in the school. The project's plan is to strengthen the Warm Home as a significant solution for the girls and, therefore, to advance and strengthen additional community services that address the girls.

The project's target population is at-risk adolescent girls aged 13-21 in danger of degeneration and neglect: girls having difficulty in the school framework, members of families having difficulty meeting their basic needs, support and protection, and new immigrant girls at risk.

In its new format, the Warm Home will operate as a multi-aspect model whose target is to broaden, deepen and improve the solution currently being offered by the Warm Home, emphasizing creative originality and innovation, and relating to cultural aspects and gender-oriented. The program is directed toward assisting in the upgrade of 22 Warm Homes (10 homes in the South, 12 homes in the North, 6 of which are in the Arab sector) for girls in distress, which operate the service for teenage and young girls in welfare services while focusing on advancing accessibility to the service for the good of new immigrant girls at risk.

Goals of the Project

- Develop and maintain the Warm Home as part of community services addressing at-risk adolescent girls and young women, and increase its accessibility to new immigrant girls.
- Reduce the number of girls at risk and distress by improving the solutions offered to these girls, and facilitate and support them in exiting the cycle of risk and the margins of society.

Partners in Operating the Project

Ministry of Welfare – Branch for Services for Alienated Youth, Services for Adolescent and Young Girls; Ministry of Immigrant Absorption, Department of Welfare Services; the Rashi Foundation; Ashalim National Insurance Institute, Fund for Children at Risk; LeYedidut Foundation; Oran Foundation.

Goals of the Research

The goals of the research are to evaluate the effectiveness of the Warm Homes project on three main levels of reference:

1. **Individual Level** – the girls participating in Warm Homes activities on a regular basis
2. **Systemic Level** – 22 Warm Homes that have been upgraded and are participating

in the project, and their reciprocal relationship with the local welfare system.

3. **Project Level** – The professional-organizational body that leads the Warm Homes project, its function to establish the methodology of the project and its implementation, according to three principles:
 - **Pre-Post Analysis** – comparison between various operational and output measurements of the Warm Homes participating in the project on the timeline: before the upgrade, during the upgrade, and after a time period of 1.5 years.
 - **Gap Analysis** – comparison between various operational and output measurements of "upgraded" homes participating in the project ("Project Homes") with "regular" homes that have not been upgraded and are not participating in the project ("Control Homes").
 - **Benchmarking** – comparison between the project work model and the different strategies to implement it with successful models appropriate for duplication in Israel that are involved with the same population and share similar goals.

Methodology

The Warm Homes project is accompanied by comprehensive research evaluation that began in March 2008 and ended in July 2009.

- **The researched population is divided into two groups:** the Warm Homes that are participating in the project ("Project Homes") and the homes that are not participating in the project ("Control Homes") that serve as the control group.
- **The quantitative portion of the evaluation is divided into three stages:** Stage 1, presented in this report, in which "Baseline" data were collected with regard to the girls and the Warm Homes; Phase 2 in September 2008, will contain collected data with regard to the girls at the beginning of the activity year 2009; and Phase 3, in which data will be collected regarding the girls and the homes at the end of one year's activity. During the entire period of evaluation there will be a comparison between the Project Homes and the Control Homes.
- **The qualitative portion of the evaluation is divided into two stages:** by September 2008 a qualitative report will be submitted containing findings with regard to operation of the Warm Homes and management of the project. In July 2009 an additional qualitative report will be submitted as the concluding evaluation.

Summary

Following is a summary of the quantitative Report 1 that constitutes the Baseline of data collection from the field. Data is compiled during April-May 2008 by Tovanot, an organizational evaluation, planning and consulting firm.

Sampling

The data received was completed by 19 Project Homes (8 in the South, 5 in the North and 6 in the Arab sector) and 13 Control Homes (6 in the Central South, 4 in the North and 3 in the Arab sector) used as the comparison group. Three Project Homes were not included in the data because of the absence of activities: Hadera, Kiryat Malachi and Yeruham.

The Control Homes were selected by the evaluation team in consultation with the Adolescent Services of the Welfare Ministry, using the following criteria: a) similarity in their backgrounds to those of the Project Homes (number of activity days, regular operation of activities); b) balanced selection (not only homes considered particularly successful or only those considered less successful); c) relative geographic proximity to the Project Homes.

The data presented about the girls participating in the Warm Homes is based on the "Adolescent Girl – Data Collection Tool". The goal of the tool is the collection and analysis of information about the girl's progress according to various parameters to determine whether or not there has been a reduction in the girl's display of at-risk behavior and an increase in using inner strengths and resources.

The data received was completed by the Warm Homes coordinators together with the home staffs. In total, data was completed with regard to 524 girls participating in 19 Project Homes and 271 girls from 13 Control Homes, totaling 795 girls.

The coordinators of the Warm Homes were asked to report on all the girls registered in the Warm Home and arriving to activities on a regular basis (at least once per week). Therefore, the reporting does not refer to a sampling of girls in each home, rather a census. The range of maximal statistical error of the project group is ± 4.37 and of the control group $\pm 6.07\%$, on the level of statistic significance of 95%.

Section A: Data on the level of the Warm Home

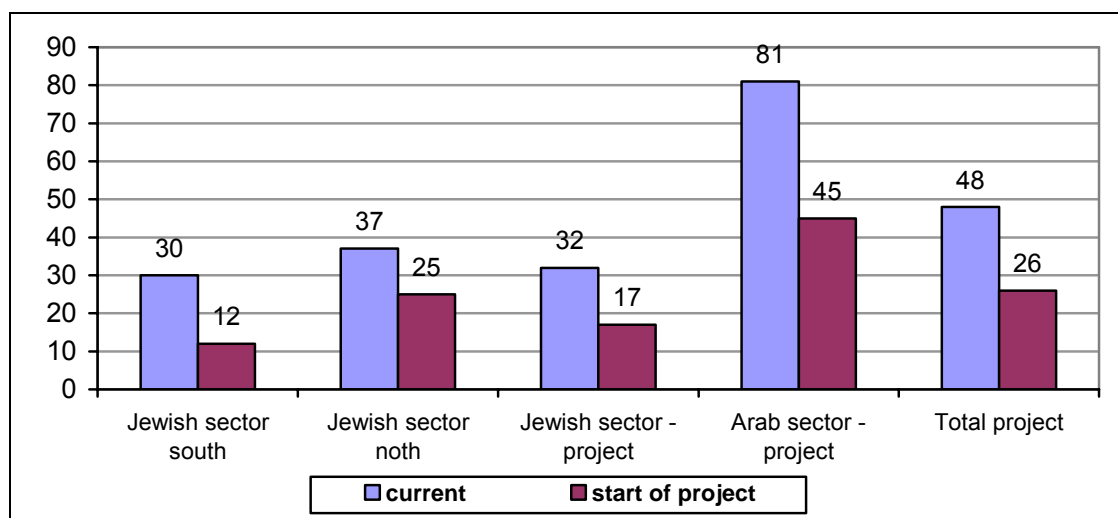
1. Profile and attendance of the girls

- The average of girls registered in Project Homes is higher by 92% than that of Control Homes (48 compared with 25, respectively).
- About 70% of the registered girls arrive regularly to activities (this average is similar in the Project Homes and the Control Homes).
- This average is higher in the Control Homes by 83% than the Project Homes (33 girls compared with 18 girls, respectively).
- The Project Homes in the Jewish sector in the North is comprised of an average

of 23% more girls than the Project Homes in the South (37 girls compared with 30 girls, respectively).

- In total, there was a significant increase of 85% in the number of girls registered in Warm Homes from the beginning of the project until today.
- The most significant rate of growth was in the southern region: 150%, compared with 80% in the Arab sector and 48% in the northern region.
- The point of time "start of the project" varies from home to home depending on the date of entering the project. This data was taken from the first report completed by the social workers in each home.

Chart 1: Change in the number of girls – comparison between the number registered today and the number registered at the start of the project



- The rate of new immigrant girls in the Project Homes stands at 48% compared with 27% in the Control Homes. (Note: a new immigrant girl is defined as a girl who was born abroad, or in Israel to parents born abroad who immigrated to Israel after 1989, or a girl of Ethiopian origin).

2. Human Resources

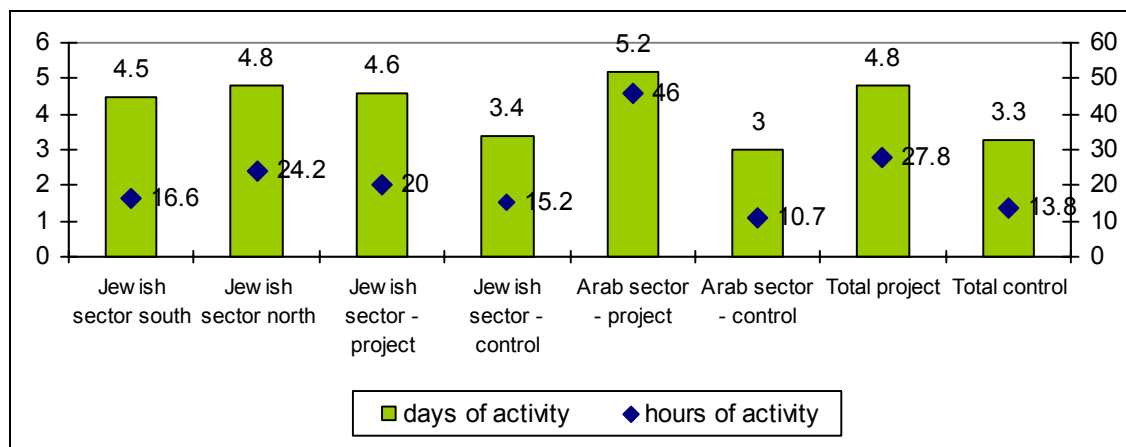
- In all of the Project Homes (19 out of 19) a social worker is employed part-time or more, while only in 5 out of 13 Control Homes is a social worker employed in this position.
- In addition, in some of the Control Homes, the social worker is not employed exclusively in the Warm Home but is also a welfare services social worker of the branch for adolescent girls.
- The average scope of the hours of salaried counselors is higher in the Control Homes than in the Project Homes (38.8 hours compared with 12 hours per month, respectively) and we can assume that this is due to the shorter amount of hours of the social worker position in these homes.
- The average amount of hours of volunteers in the Warm Home is significantly higher in the Project Homes than in the Control Homes (48.5 hours compared with 11.4 hours, respectively).

- Moreover, there are more volunteers on average in the Project Homes than in the Control Homes (3.1 volunteers compared with 1.6 per home, respectively).
- Overall, there is a clear preference for the Project Homes, whether in employment positions or in the number of volunteers, compared with the Control Homes. This enables the staff of the home "to produce" many more activities for the girls.

3. Scope and Characteristics of the Activities

- The Project Homes operate an average of 1.5 days more per week than the Control Homes.
- This is manifested as twice the amount of weekly activity hours in the Project Homes.
- 13 out of 19 (68%) of the Project Homes operate 5 days per week, compared with 3 out of 13 (23%) of Control Homes.

Chart 2: Average number of days and hours of weekly activities in the Warm Home



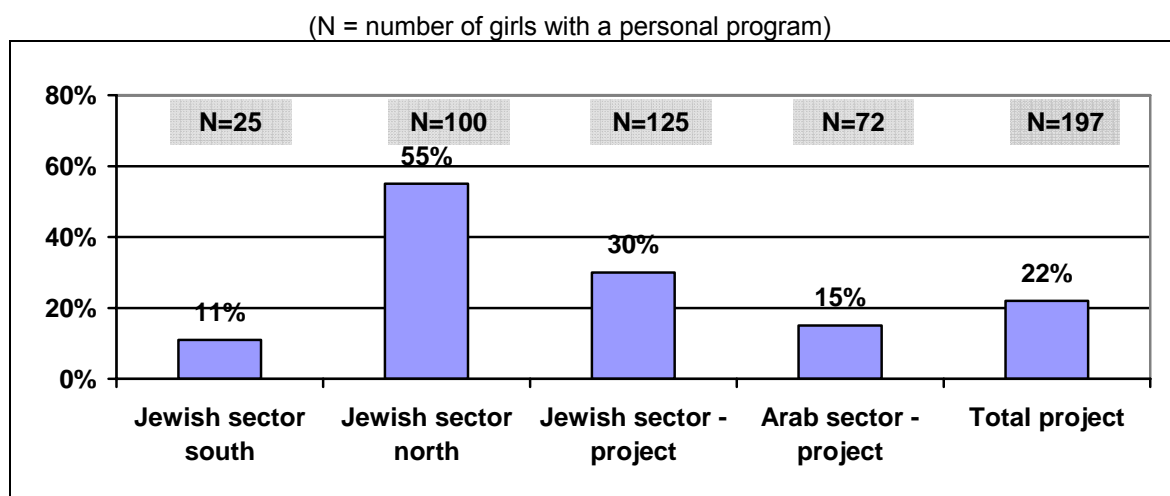
- Comparison between the amount of activity types in the Warm Home shows that in the Project Homes there are more enrichment activities and fewer leisure activities. The amount of therapeutic activities and "other" activities is shown to be similar.
- All of the Project Homes of the Arab sector are involved in developing business entrepreneurship among the girls, compared with slightly higher than one third in the Jewish sector in the southern region and one fifth of the homes in the northern region.

4. Connection with parents and agents in the community

The "Personal Program" is a work tool introduced in the Project Homes a number of months ago. There is a Personal Program for one fifth of the girls (197 girls) in the Warm Home, written by the home's staff – a significant achievement in view of the short time allotted and the work load placed on the social workers in the Warm Homes.

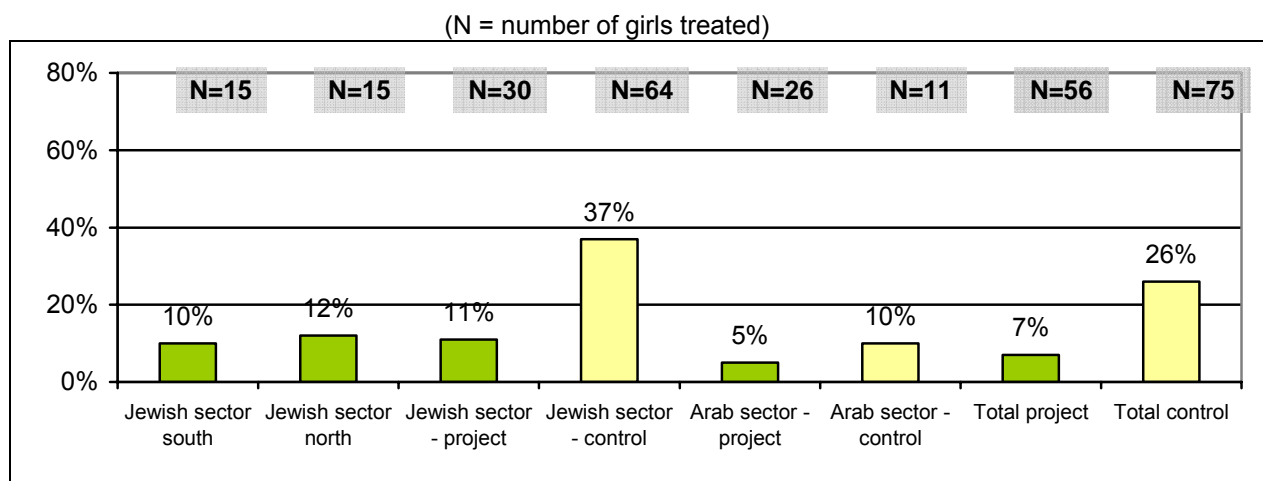
- The northern region (100 girls) stands out positively in this aspect compared with the southern region (25 girls) and the Arab sector (72 girls), with more than half of the girls having a Personal Program.

Chart 3: Rate of girls with a Personal Program



- Individual treatment:** Only about 7% of the girls in the Project Homes receive individual treatment from a welfare services social worker, compared with 26% in the Control Homes. There is a gap between the rate of girls receiving individual treatment in the Jewish sector and those in the Arab sector. This gap is particularly prominent in the Control Homes (37% compared with 10%, respectively).

Chart 4: Rate of Girls receiving individual treatment from a welfare services social worker



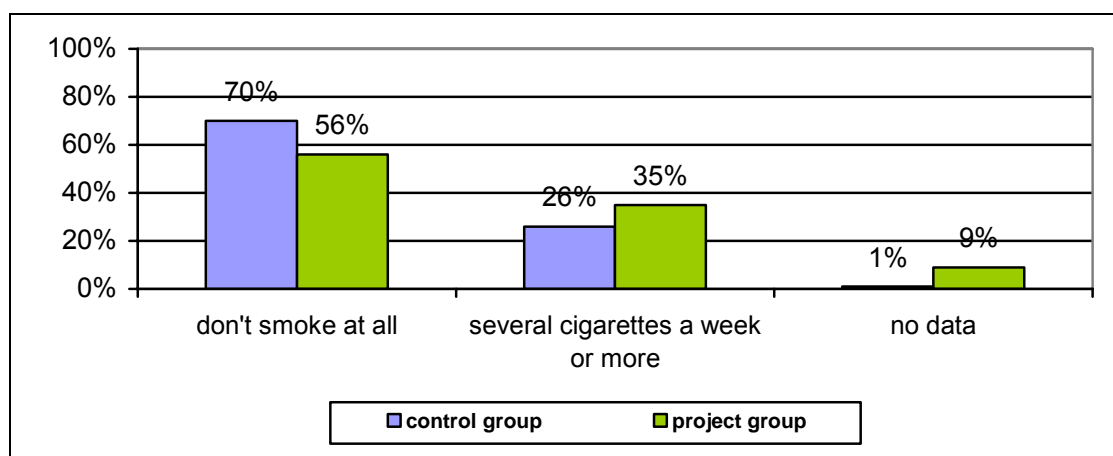
- Parental activities:** During March 2008, there were more activities with the girls' parents in Project Homes than in Control Homes (13 compared with 7, respectively). More homes in the Arab sector, both in the project and the control, ran parental activities.

Section B: Data on the level of the Girls

1. At-Risk Behaviors

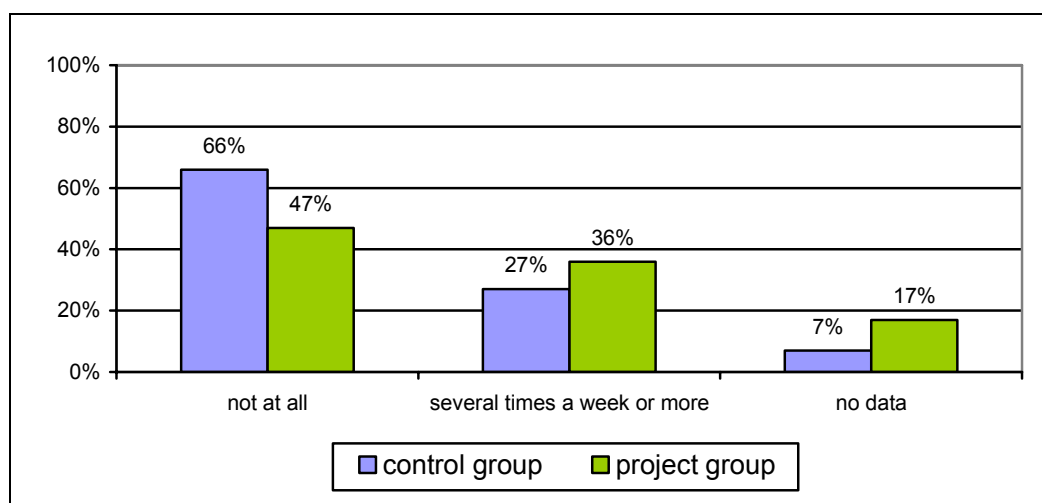
- Cigarette consumption:** The rate of girls who smoke in the Project Home is higher by 9% than the Control Homes (35% compared with 26%, respectively). In the Arab sector, reporting on the rate is negligible; therefore, this item does not appear on the chart.

Chart 5: Distribution of the girls by cigarette smoking (Jewish sector only)



- Alcohol Consumption:** The rate of girls consuming alcohol in the Project Homes is higher by 9% than the Control Homes (36% compared with 27%, respectively). Regarding 17% of the girls in the Control Homes, data was not collected on the subject due to lack of information on the part of the home coordinator. In the Arab sector, reporting on the rate is negligible; therefore, this item does not appear on the chart.

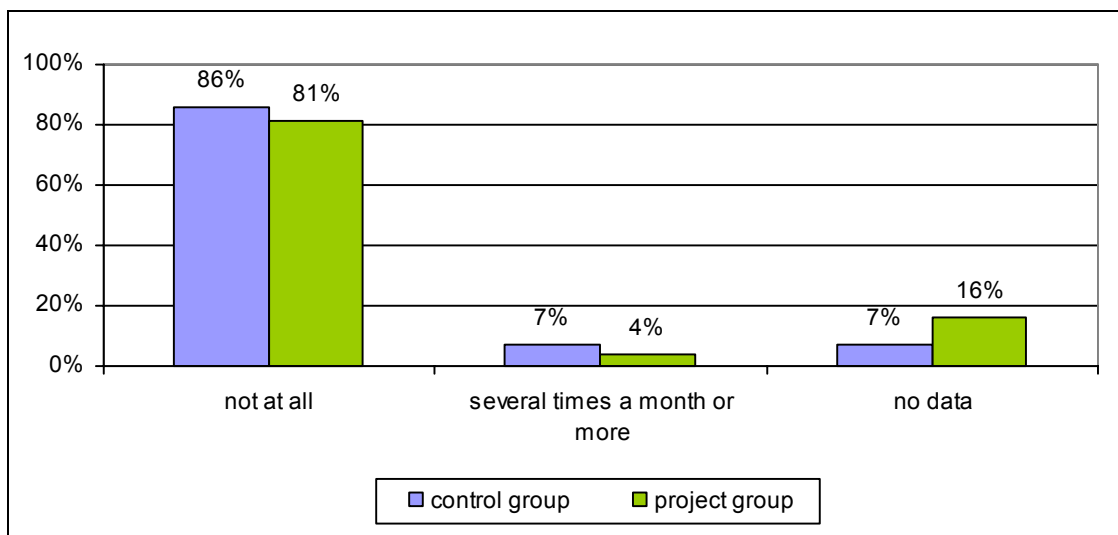
Chart 6: Distribution of the girls by alcohol consumption (Jewish sector only)



- Drug consumption:** The rate of girls using drugs in the Control Homes is higher

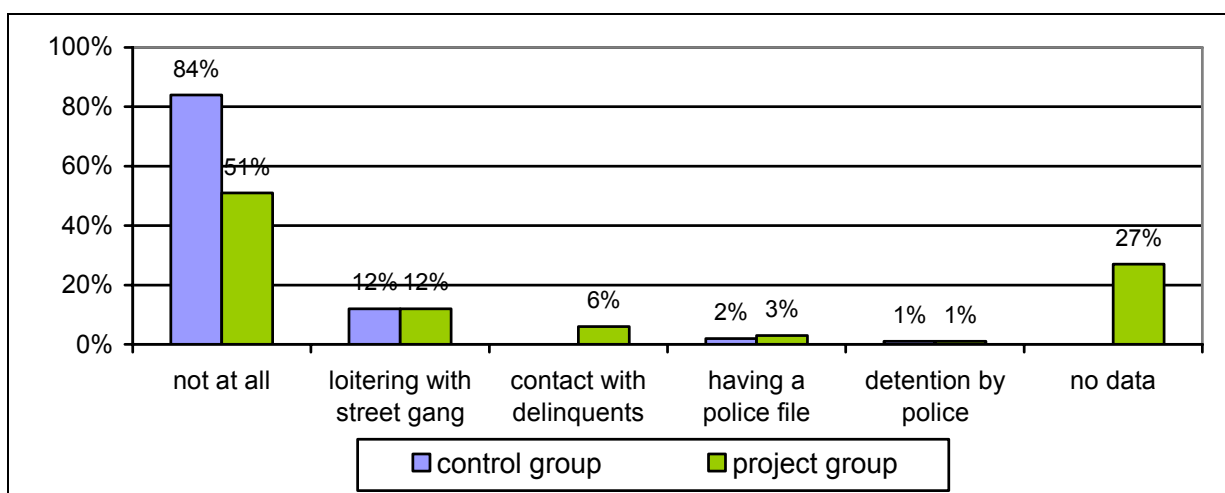
by 3% than in the Project Homes (7% compared with 4%, respectively). This difference is not significant. Also in this case, the rate of information missing from the Project Homes is relatively higher and stands at 16%. In the Arab sector, reporting is negligible; therefore, this item does not appear on the chart.

Chart 7: Distribution of the girls by drug consumption (Jewish sector only)



- **Delinquency level:** Overall, the rate of involvement in delinquency is similar in the Project Homes and in the Control Homes. There is a wide gap in the information missing between the Project Homes and the Control Homes (27% compared with 0%, respectively).

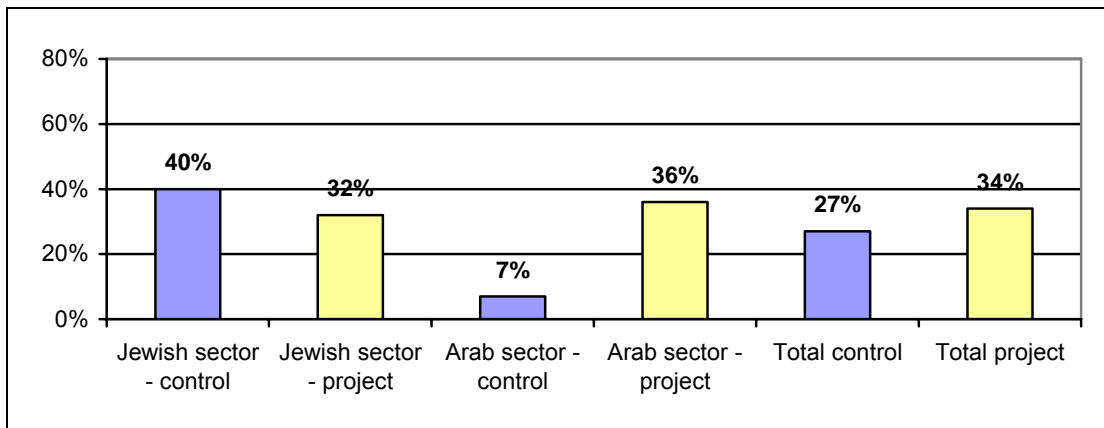
Chart 8: Distribution of the girls by involvement in delinquency (Jewish sector only)



- **Regular school attendance:** Overall, it can be said that the girls in the Project

Homes are absent from school more frequently than the girls in the Control Homes. It can be seen that in the Project Homes in the Arab sector the rate of absence is prominent compared with the Control Homes and the Project Homes in the Jewish sector. A large amount of information is missing on the subject in the Project Homes as well as in the Control Homes.

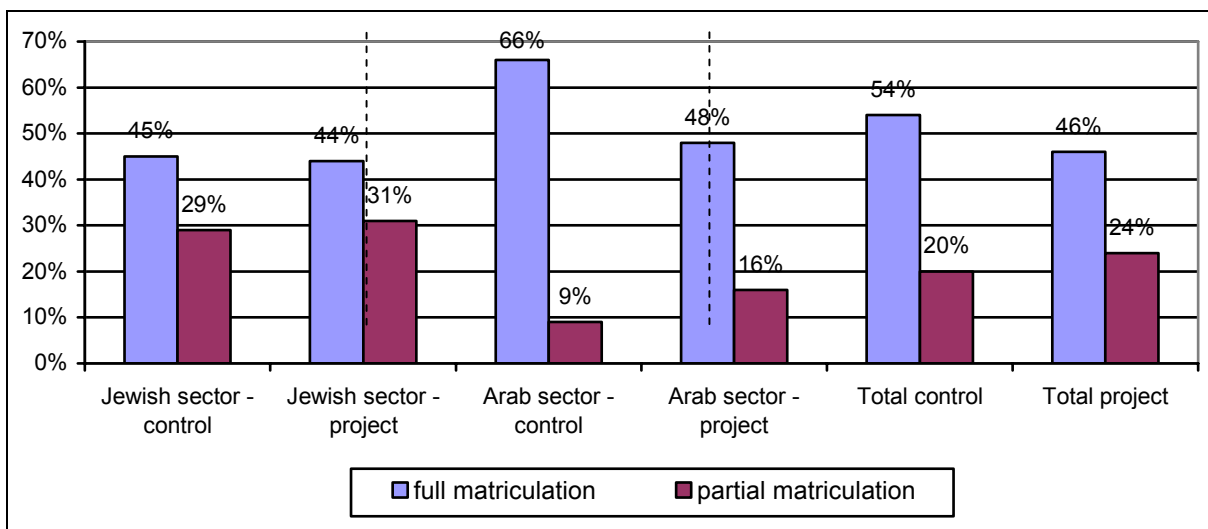
Chart 9: Rate of girls absent from school two days and more during past month (March 2008)



2. Inner resources and strengths of the girls

- Learning Status:** The rate of girls in the Control Homes directed to a full matriculation learning track is greater compared with the Project Homes (54% compared with 46%, respectively). The widest gap between the Control Homes and the Project Homes is found in the Arab sector: 65% compared with 48% on a full matriculation track.

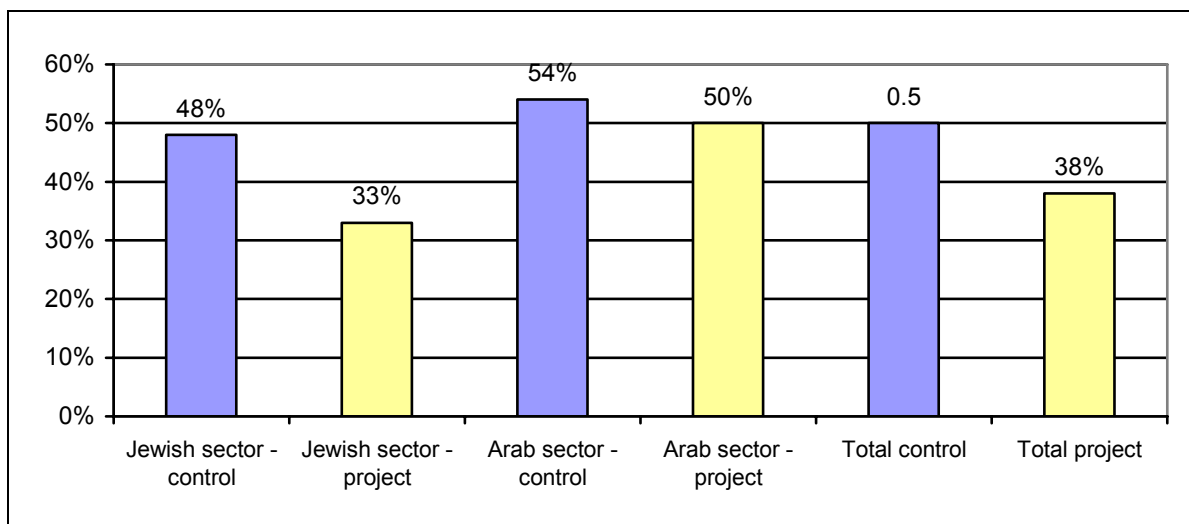
Chart 10: Learning Track



- The girl's contribution to the Warm Home:** The rate of girls reported contributing to the Warm Home on a scale of high-very high is greater in the

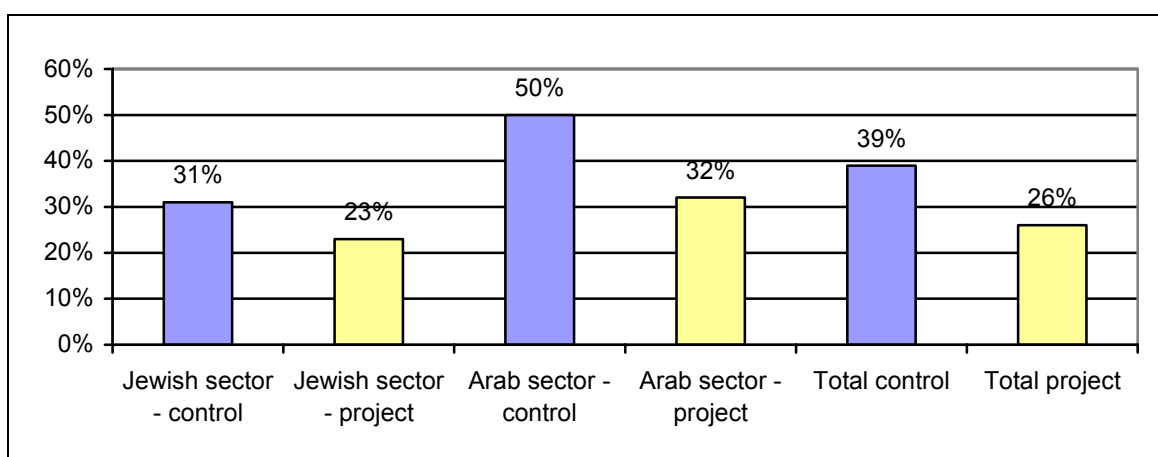
Control Homes than in the Project Homes (50% compared with 38%, respectively). The widest gap between the Control Homes and the Project Homes is found in the Jewish sector: 48% compared with 33%.

Chart 11: Rate of girl's contribution to the home's activities (scale of high-very high)



- Future ambitions and aspirations:** The rate of girls reported to talk about plans and dreams for the future on a scale of often-very often is higher in the Control Homes compared with the Project Homes (39% compared with 26%, respectively). The widest gap between the Control Homes and the Project Homes is found in the Arab sector: 50% compared with 32%.

Chart 12: Distribution of frequency of talking about future plans and dreams (scale of often-very often)



Summary of the Findings

1. On the level of the Warm Home

- There was a significant growth of 85% in the number of girls registered in the Warm Homes from the start of the project until today.
- The mix of girls changed in the upgraded homes and it includes more new immigrant girls (48% of the girls are new immigrants)
- In the Project Home the social worker position is wider, there are more volunteers and there are more activity hours. Nevertheless, the number of counselors employed by the hour is lower compared with the Control Homes.
- The Project Homes operate on an average of 1.5 days more per week than the Control Homes. This is manifested as twice the amount of weekly activity hours in the Project Homes.
- There are more parental activities in the Project Homes.
- One fifth of the girls (197 girls) in the Project Home has an Personal Program written by the home staff, a significant achievement considering the short time allotted and the work load placed on the social workers.
- The girls receive fewer individual treatments from welfare services social workers: only about 7% of the girls in the Project Homes compared with 26% in the Control Homes.

2. On the level of the girl

- Overall, one can say that from the point of time that was examined, the girls in the Project Homes are characterized as displaying a higher incidence of at-risk behavior: cigarette smoking (9% more), alcohol (9% more) and drug use (3% more). The rate of delinquency and level of self-injury is similar.
- The girls in the Project Homes are absent from school more frequently and directed less frequently to the full matriculation learning track (46% in the project compared with 54% in the control).
- It was found that girls in the Control Homes express more inner strengths and resources compared with girls in the Project Homes.

As of March-April 2008. Tracking Base Line data for a period of one year will enable identifying the level of effectiveness of operating the Warm Homes project.